

MeiG-SLM926

Multi-Mode LTE Smart Module

Support Wi-Fi & BT



MeiG Smart SLM926 is the latest smart module using Qualcomm snapdragon QCM4290(SM6115) platform with 11nm FinFET process, built-in 64bit ARM(4*A73 2.0GHz+4*A53 1.8GHz). SLM926 installs three Camera ISP, supports 1080P@60fps video encoding/decoding, H.265 and FHD+ screen resolution running Android 12 operating system, built-in on-board memory 3GB+32GB (2GB+16GB, 4GB+64GB). It supports LTE Cat.6, with a maximum downlink rate of 300Mbps and a maximum uplink rate of 50Mbps. This broadband smart module integrates L1+L5 GNSS, 2.4&5G Wi-Fi and BT5.0, supports multi-modes of connectivity including TD-LTE/ FDD-LTE/ WCDMA/ EVDO/ TD-SCDMA/ CDMA/ GSM.

SLM926 series modules support the following markets: SLM926-C, SLM926-E, SLM926-A*, SLM926-LA*、SLM926-J*、SLM926-AU*、SNM926(WiFi only).

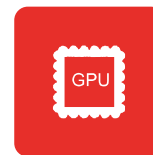
SLM926 can provide functions such as voice, SMS, address book, 2.4G/5G Wi-Fi, BT and GPS. It supports dual 1300W 3D camera or the depth-of-field camera, which can be widely used in video recorder, intelligent POS cash registers, logistics terminals, VR Camera, intelligent robots, video surveillance, security surveillance, automotive equipment, intelligent information collection equipment, intelligent handheld terminals, UAV and other products.

Main Advantages:

- ✓ Support LTE Cat 6 and 2x20MHz CA, max DL 300Mbps
- ✓ Support multi-modes of cellular connectivity
- ✓ Support main screen display FHD+ (2520*1080)@60pfs
- ✓ Support 3×ISP, 3×Camera
- ✓ Integrated L1+L5 GNSS for fast and accurate positioning in different environments.
- ✓ Support 1080@60fps encode/decode



Octa-Core CPU
Up to 2.0GHz



Qualcomm
Adreno 610



Android 12



Cat6
Max 300Mbps(DL)
Max 50Mbps(UL)



BT 5.0
(BR/DDR+BLE)



IEEE 802.11
a/b/g/n/ac

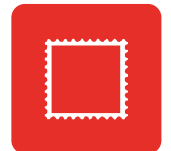


L1+L5

GPS+BeiDou+GLONASS



H.264/H.265

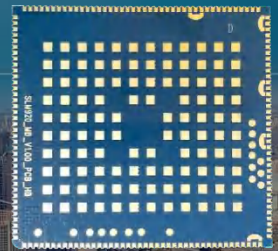


LCC+LGA

MeiG-SLM926

Multi-Mode LTE Smart Module

Support Wi-Fi & BT



China/India

SLM926-C:

LTE FDD: B1/B3/B5/B8

LTE TDD: B34/B38/B39/B40/B41

WCDMA: B1/B8

TD-SCDMA: B34/B39

EVDO/CDMA: BC0

GSM: 900/1800MHz

EU/Middle East/Africa/South Korea/Thailand

SLM926-E:

LTE FDD: B1/B3/B5/B7/B8/B20/B28

LTE TDD: B38/B40/B41

WCDMA: B1/B5/B8

GSM: 850/900/1800MHz

North America

SLM926-A*:

LTE FDD: B2/B4/B5/B7/B12/B13/B17/B25/B26/B66

WCDMA: B2/B4/B5/B8

GSM: 850/1900MHz

Australia/Taiwan/Brazil

SLM926-AU*:

LTE FDD: B1/B3/B5/B7/B8/B28

LTE TDD: B40

WCDMA: B1/B5/B8

GSM: 850/900/1800MHz

Japan

SLM926-J*:

LTE FDD: B1/B3/B8/B18/B19/B26

LTE TDD: B41

WCDMA: B1/B6/B8/B19

Latin America

SLM926-LA*

LTE-FDD: B2/B4/B5/B7/B8/B25/B28/B66

LTE TDD: B40

WCDMA: B2/B5/B8

GSM: 850/900/1900MHz

Global

SNM926

Wi-Fi & BT only

Data Features

LTE:

Cat 4 FDD: Max 300Mbps (DL)/50Mbps (UL)

Cat 4 TDD: Max 265Mbps (DL)/35Mbps (UL)

UMTS:

DC-USDPA: Max 42Mbps (DL)

HSUPA: Max 5.76Mbps (UL)

WCDMA: Max 384Kbps (DL/UL)

TD-SCDMA:

Max 4.2Mbps (DL)/2.2Mbps (UL)

CDMA2000:

EVDO: Max 3.1Mbps (DL)/1.8Mbps (UL)

1X Advanced: Max 307.2Kbps (DL/UL)

GSM:

GPRS: Max 107Kbps (DL)/85.6Kbps (UL)

EDGE: Max 236.8Kbps (DL)/236.8Kbps (UL)

Electricity Parameter

Power supply voltage: 3.55V~4.4V, typical value 3.8V

Transmission Power

Class 4 (33dBm±2dB) for GSM850

Class 4 (33dBm±2dB) for EGSM900

Class 1 (30dBm±2dB) for DCS1800

Class 1 (30dBm±2dB) for PCS1900

Class E2 (27dBm±3dB) for GSM850 8-PSK

Class E2 (27dBm±3dB) for EGSM900 8-PSK

Class E2 (26dBm±3dB) for DCS1800 8-PSK

Class E2 (26dBm±3dB) for PCS1900 8-PSK

Class 3 (24dBm+1/-3dB) for WCDMA bands

Class 3 (24dBm+3/-1dB) for EVDO/CDMA BC0

Class 2 (24dBm+1/-3dB) for TD-SCDMA bands

Class 3 (23dBm±2dB) for LTE-FDD bands

Class 3 (23dBm±2dB) for LTE-TDD bands

Sensitivity

LTE FDD B1: -102dBm LTE FDD B3: -102dBm

LTE FDD B5: -102dBm LTE FDD B8: -102dBm

LTE TDD B34: -101dBm LTE TDD B38: -102dBm

LTE TDD B39: -102dBm LTE TDD B40: -102dBm

LTE TDD B41: -102dBm WCDMA B1: -110dBm

WCDMA B8: -110dBm TD-SCDMA B34: -109dBm

TD-SCDMA B39: -109dBm

EVDO/CDMA BC0: -109dBm

EGSM900: -109dBm

DCS1800: -109dBm

Audio & Video

Support VoLTE Ultra HD voice calls SRVCC

CSFB voice fallback technology

24-bit/192kHz high fidelity music playback

Video codec: 1080P@60fps

Wi-Fi video: codec 1080P@60fps

Interface

Display Interface

4-lane MIPI_DSI, FHD+(2520*1080) @60fps

Camera Interface: 3*ISP

Main Camera: 4-lane MIPI_CSI;

Auxiliary Camera: 4-lane MIPI_CSI ;

Max Rate 2.5Gbps/Lane;

(13+13+5MP), (25+5MP), (13+13MP) @30fps

or (16+16MP)@ 24fps

Touch Screen Interface: capacitive touch screen

Audio Interface

Analog Audio : speaker, earpiece, earphone, 3x microphones

Support 1x noise reduction microphone

USB Interface

Conform to USB 3.0 standard, support USB OTG

Antenna Interface

Main antenna, diversity antenna, GNSS antenna and Wi-Fi & BT antenna

Other Interface

I2C interface:

7 (sensor x1, TP x1, CAM x2, QUP_I2C x3)

(U)SIM interface: 2 (1.8V/2.95V)

UART interface:3 (support HW flow control, max 4Mbps)

SD card interface: 1 (support SD 3.0, 4-bit SDIO)

PWRKEY: 1.8V, Internal pull-up

SPI interface: 2 (Multiplex pin with UART/I2S)

ADC interface: 2

GPIO interface: 27

Motor driver interface:1(no-PMI version not supported)

Flashlight interface: 1 (no-PMI version not supported)

Outstanding Feature

WLAN: 2.4G/5G, 802.11 a/b/g/n/ac

BT: BT2.1+EDR/3.0/4.1 LE/4.2 BLE, BT5.0

GNSS: GPS/GLONASS/BeiDou

LTE Cat4,

LTE Cat 6, support 2x20MHz CA

Support diversity receiving antenna, DL MIMO 2x2

Bandwidth: 1.4/3/5/10/15/20MHz

Built-in charge IC and coulomb counter

Support DSDS

Firmware update via USB

General Feature

OS: Android 12

Storage:

32GB eMMC+3GB LPDDR4 (Default)

16GB eMMC+2GB LPDDR4 (Option)

64GB eMMC+4GB LPDDR4 (Option)

Working temperature range: -25°C ~ +75°C

Storage temperature range: -40°C ~ +90°C

Working voltage: 3.5V~4.35V (typical value: 3.8V)

Module Size: 41.0mm × 45.5mm × 3.00mm

Package: LCC+LGA

Weight: 13.0g

Certification

CCC* (China)

* means in developing